

APOLLO

WHITEPAPER



SUMMARY

- 01 INTRODUCTION
- 02 ROAD MAP
- 03 TOKENOMICS
- 04 MARKETING
- 05 CONCLUSION



APOLLO

INTRODUCTION

A TOKEN MADE TO SUPPORT AND HONOR SPACEX'S NEWEST ROBOTIC COMPANION, APOLLO.

THIS AI CANINE IS CURRENTLY UNDER DEVELOPMENT BY SPACEX AT THE STARBASE WITH PLANS TO REVOLUTIONIZE THE WAY WE EXPLORE SPACE. APOLLO TOKEN AIMS TO PAY TRIBUTE TO APOLLO, ONE OF SPACEX'S BOSTON DYNAMIC ROBOTIC DOGS. WE HAVE NO AFFILIATION WITH SPACEX, INC.

APOLLO

ROAD MAP

PHASE 1

- 01 Website V1 Launch
- 02 Stealth Launch Apollo Token
- 03 Liquidity Lock and Contract Renounce
- 04 Apply for Dextools Socials
- 05 Listing on CG and CMC



ROAD MAP

PHASE 2

01

Reach 1000 holders

02

Build a community which is passionate about the future of Apollo token

03

Introduce DAPP on Website and integrate AI utilities for holders

04

Update trust wallet and etherscan logo



ROAD MAP

PHASE 3

- 01 Website V2
- 02 Audits and AMAS
- 03 Onboard an international marketing team to focus on external strategies
- 04 Get listed on bigger centralized exchanges to expand our reach



TOKENOMICS

1%

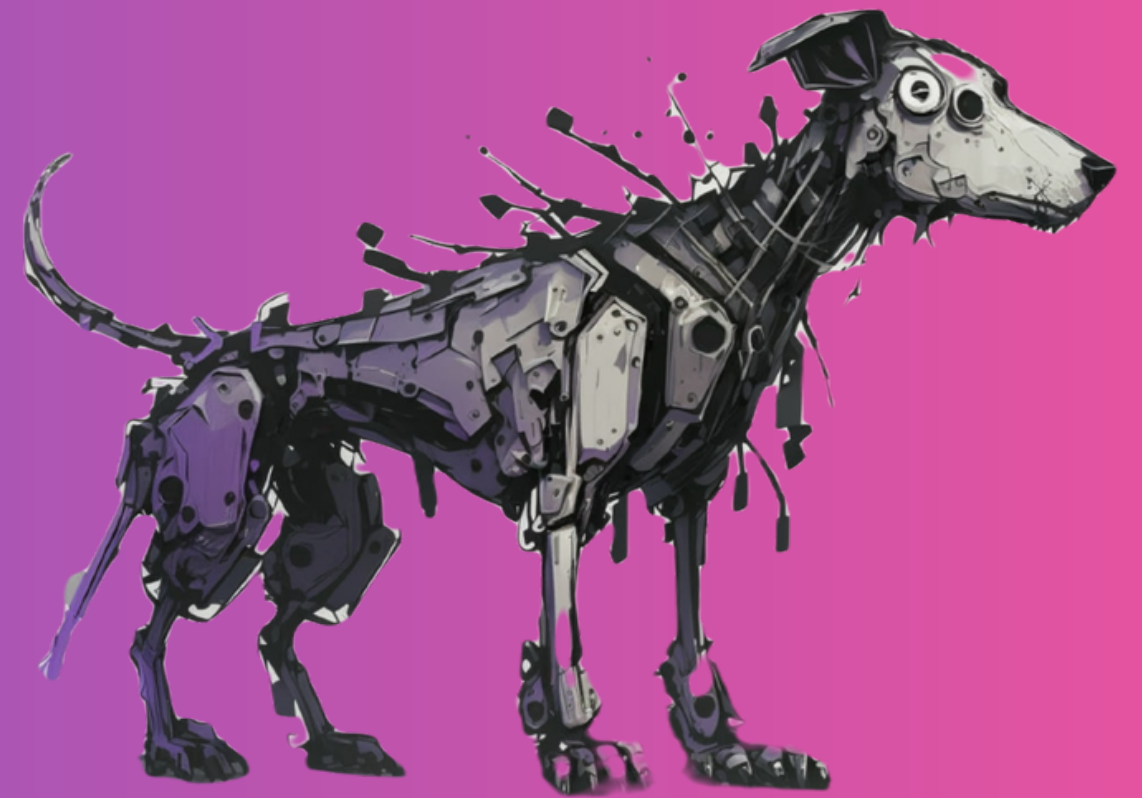
MARKETING

1% for marketing and
development

10B

SUPPLY

Total of 10 Billion Tokens



APOLLO

MARKETING

APOLLO TOKEN'S MARKETING TEAM IS HIGHLY EXPERIENCED THAT IS WHY \$APOLLO WILL BENEFIT FROM A COMPREHENSIVE MARKETING STRATEGY WHICH INVOLVES SOCIAL MEDIA INFLUENCERS, PRESS ARTICLES, LISTINGS ON PLATFORMS, ADS ON MAJOR PLATFORMS, PARTNERSHIPS WITH OTHER CRYPTOCURRENCIES, TWITTER COLLABORATIONS AND EVEN MORE

THIS MARKETING STRATEGY WILL CREATE AN AMAZING APOLLO COMMUNITY TO REACH PLACES WHERE OTHER TOKENS FAILED TO REACH

CONCLUSION

IN CONCLUSION, \$APOLLO IS A UNIQUE TOKEN THAT AIMS TO BUILD A COMMUNITY TO SUPPORT AND HONOR SPACEX'S NEWEST ROBOTIC COMPANION, APOLLO.

JOIN US ON THIS MISSION TO SPREAD THE SUCCESS OF \$APOLLO AND CREATE FURTHER OPPORTUNITIES IN THIS CRYPTO SPACE.





THANK YOU

JOIN OUR APOLLO COMMUNITY



@Apollo_erc



<https://apollo.token.finance/>



https://twitter.com/apollo_erc